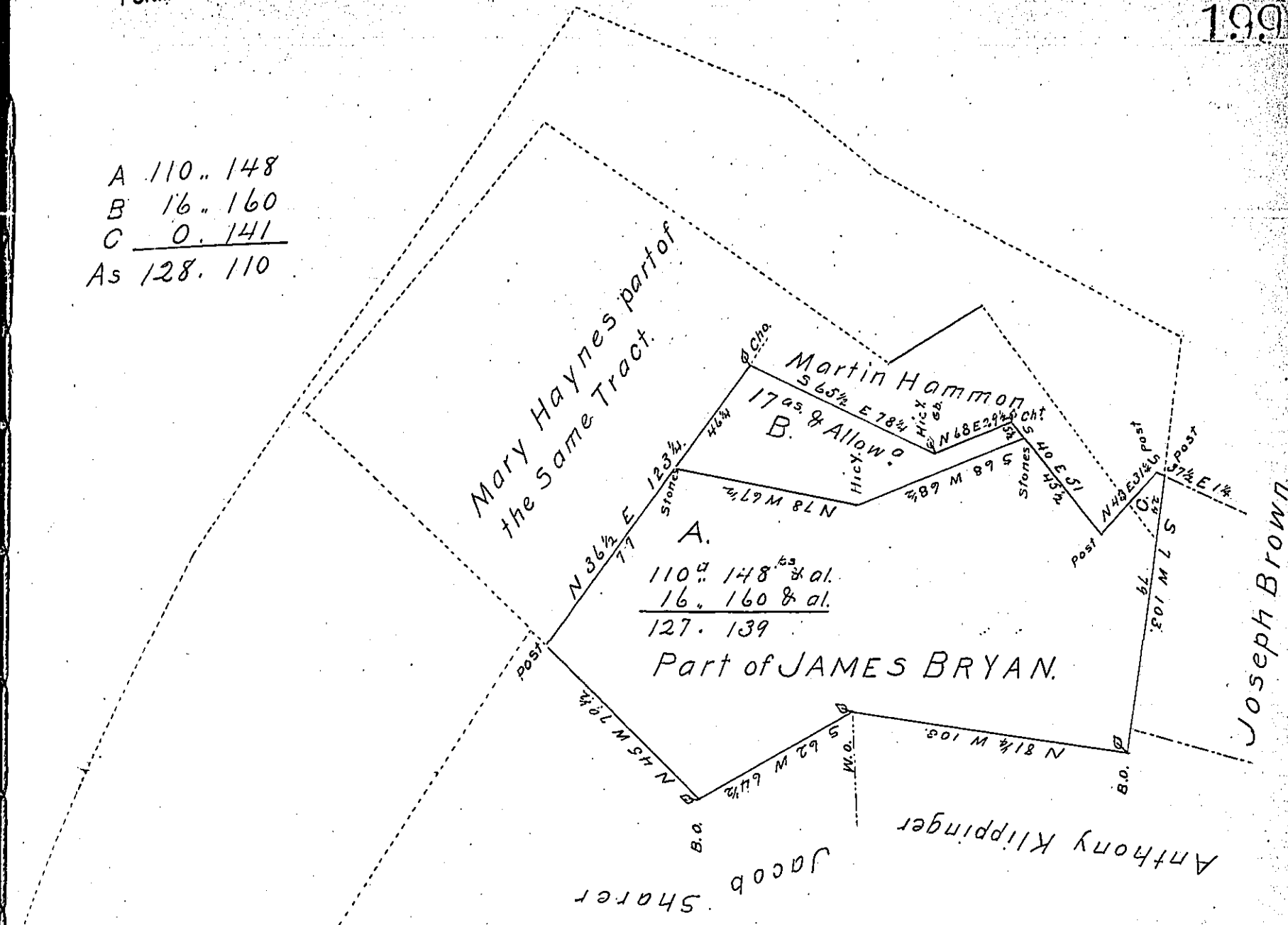


A 110.. 148
 B 16.. 160
 C 0.. 141
 As 128. 110



A Draught of a Tract of Land situated Metal Township
 Franklin County, containing in the whole one hundred &
 twenty eight Acres and one hundred & ten perches & allowance of
 six per cent for Roads &c. The parts marked A & B, containing 127
 Acres 139 perches are parts of a larger tract of 195 Acres 64 perches
 Surveyed 16 Novr 1786. on Warrant to James Bryan bearing date
 25th August 1786. - the small triangle marked C, containing
 141 perches is part of 220^{ac} 51 perches Surveyed 11th Apl 1793. on
 Warrant to James Bryan, dated 24th December 1792. Resurveyed
 and divided off for Joseph Brown the 25th March 1824

Certified the 28th June 1831. William S. Davis D.C.
 To Jacob Spangler Esq. } I approve of the above Returns
 Surveyor General } Given under my hand the
 See Note accompanying this Survey. 29th July 1833.
 Seth Kline D.C.

IN TESTIMONY that the above is a copy of the original remaining on file in
 the Department of Internal Affairs of Pennsylvania, made
 conformably to an Act of Assembly approved the 16th day of
 February, 1833, I have hereunto set my Hand and caused
 the Seal of said Department to be affixed at Harrisburg,
 this fourth day of January 1904.

George D. Brown
 Secretary of Internal Affairs.